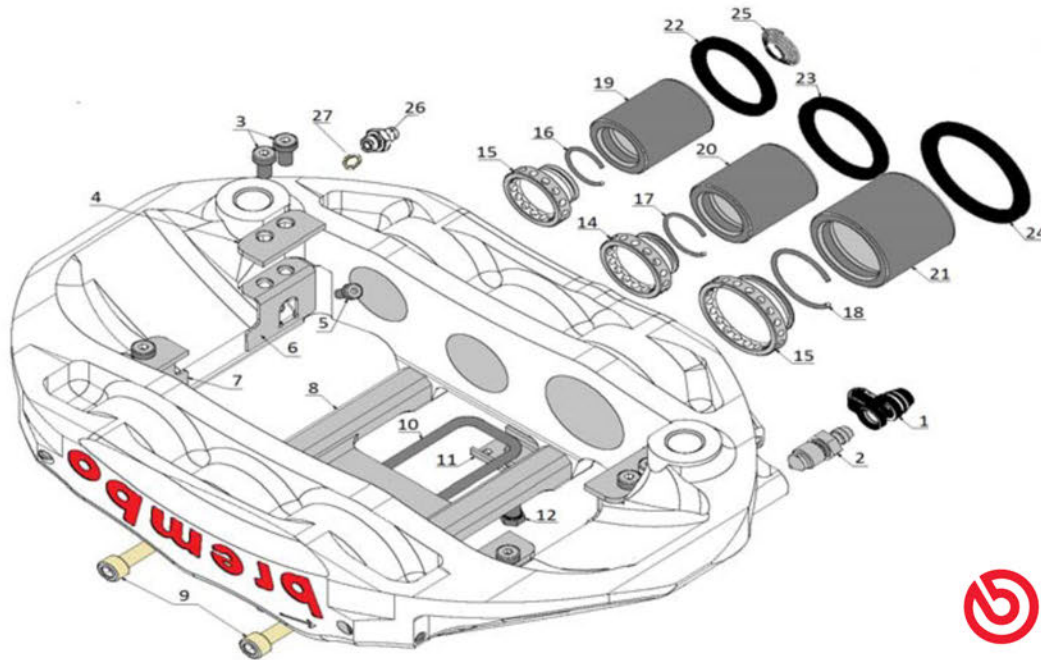




### Caliper XA4-F1 01/02

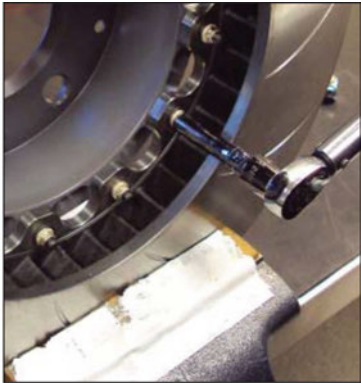
Caliper Weight lbs	6.90	Disc Thickness mm	28,32	Bracket Studs	80.080C
Pistons number	6	Disc Diameter mm	355-380	LH / RH Caliper #	F1-01 / F1-02
Piston Diameters mm	28 , 30 , 38	Pad Shape Brembo #	1980	Caliper Body	Monobloc
Piston Area sq.cm	49.13	Pad Area sq.cm	78.5 sq. cm	Caliper Material	Aluminum
Fluid Capacity cc	115.4	Max Pad Thickness mm	31.5	Series	Trophy Truck Wide



Item	Description	Part Number	Qty
1	Bleed Screw Cap	05150220	2
2	Bleed Screw	5281233	2
3	Pad Support Screw	A11244101	8
4	Pad Support	20726912	4
5	Abutment Plate Screw	A11234064	4
6	Abutment plate	20726831	2
7	Abutment plate	20726832	2
8	Bridge Spacer	X99F707	2
9	Bridge Spacer Screw	X977028	2
10	Pad Retaining Spring	20400223	4
11	Pad Spring Plate	20455131	1
12	Pad Spring Screw	05582917	1
13	28 mm Piston Insert	20546262	2
14	30 mm Piston Insert	20546263	2
15	38 mm Piston Insert	20546267	2
16	Retaining Clip for 28 mm Insert	05209130	2
17	Retaining Clip for 30 mm Insert	05209131	2
18	Retaining Clip for 38 mm Insert	05209135	2
19	28 mm Piston	20590972	2
20	30 mm Piston	20590973	2
21	38 mm Piston	20590977	2
22	28 mm Seal	05722440	2
23	30 mm Seal	05722441	2
24	38 mm Seal	05722445	2
25	Knock Back Spring	05436073	6
26	Inlet Connector	06371020	1
27	Copper Seal	06219613	1



760-727-9900  
 INFO@IDDESIGNS.NET  
 WWW.IDDESIGNS.NET  
 2485 Coral St. Unit A, Vista, CA 92081



## Caliper Components

Part	Description	Apply on Threads	Tourqe Specification
05.2812.33	Caliper Bleed Screw	Room Temp	124 to 140 inch lbs
All	Cross over tubes	N/A	160 to 175 inch lbs
All	Caliper Inlet Fittings	N/A	216 to 230 inch lbs
80.026AB	E5 & A4 Caliper Half Bolts	Anti Seize	24 ft lbs
MS-7	Front Caliper Jet Nuts	Anti Seize	35 ft lbs
MS-6	Rear Caliper Jet Nuts	Anti Seize	25 ft lbs
4mm	Abutment Plate Screws	Blue Loctite	35 to 44 inch lbs
5mm	Abutment Plate Screws	Blue Loctite	62 to 70 inch lbs
6mm	Abutment Plate Screws	Blue Loctite	80 to 88 inch lbs

## Rotor & Bell Assemblies

Part	Description	Apply on Threads	Tourqe Specification
HM41-060	T- Bobbin Jet Nut	Blue Loctite	90 to 105 inch lbs
All	STD Round Bush Screws	Blue Loctite	62 to 70 inch lbs
XA5.K0.51	Tooth Rotor Screw sm	Red Loctite	35 inch lbs
05.8774.07	Tooth Rotor Screw lg	Red Loctite	62 inch lbs

