

DISCLAIMER OF WARRANTY AND LIMITATION OF LIABILITY

Due to the intended use of high performance products, ID Designs and each part thereof, are sold "AS IS" and with all faults. To the fullest extent allowed by law, ID Designs makes NO written, oral, expressed, or implied statement of warranty or guarantee on any product or part sold. ID Designs will not be liable for any direct, indirect, incidental, consequential, or special damages, including but not limited to, damage, injury, loss of life, loss of property or equipment, loss of profits or revenue, or claims from any individual or entity arising from the use of any ID Designs product.

RACING IS A DANGEROUS ACTIVITY AND PURCHASERS OF ID DESIGNS PRODUCTS ACKNOWLEDGE THE INHERENT RISKS ASSOCIATED. ID DESIGNS MAKES NO REPRESENTATIONS THAT ITS PRODUCTS CAN REDUCE OR ELIMINATE ANY SUCH RISK. ID DESIGNS products are NOT FOR STREET, HIGHWAY, OR AIRCRAFT USE and are intended ONLY for race vehicles operated on race tracks with appropriate supervision of qualified technicians or mechanics to ensure that the safety needs of the race driver and others are met. ID Designs products could be combined with other products or parts which may not be suitable and could adversely affect performance of other race parts or the vehicle. The user shall determine the ultimate suitability and safety of the product for its intended use, and the user assumes all responsibility and risk in connection therewith.

ID DESIGNS
2485 CORAL ST. UNIT A
VISTA, CA 92081
PH.760.727.9900
E MAIL INFO@IDDESIGNS.NET

TITLE:
**LT DUAL ALT ENGINE
ACCESSORY PACKAGE**

| | | | |
|--|---------------------------------|--------------|--|
| PROPRIETARY AND CONFIDENTIAL THE INFORMATION CONTAINED IN THIS DRAWING IS THE SOLE PROPERTY OF ID DESIGNS. ANY REPRODUCTION IN PART OR AS A WHOLE WITHOUT THE WRITTEN PERMISSION OF ID DESIGNS IS PROHIBITED. | | | |
| SIZE C | PART NO. IDD 11-1900-02 REV1 | REV | |
| SCALE: 1:5 WEIGHT: | | SHEET 1 OF 5 | |

4

3

2

1

6.262

6.375

16.542

15.925

16.625

7.368

4.098

BLOCK TO \varnothing OF HB

6.927

BLOCK TO \varnothing OF PULLEY

7.615

BLOCK TO FRONT OF PULLEY

8.573

BLOCK TO PUMP SNOOT

THIS SYSTEM IS DESIGNED AROUND THE
L86 DEPTH ATI DAMPER
ATI-918645

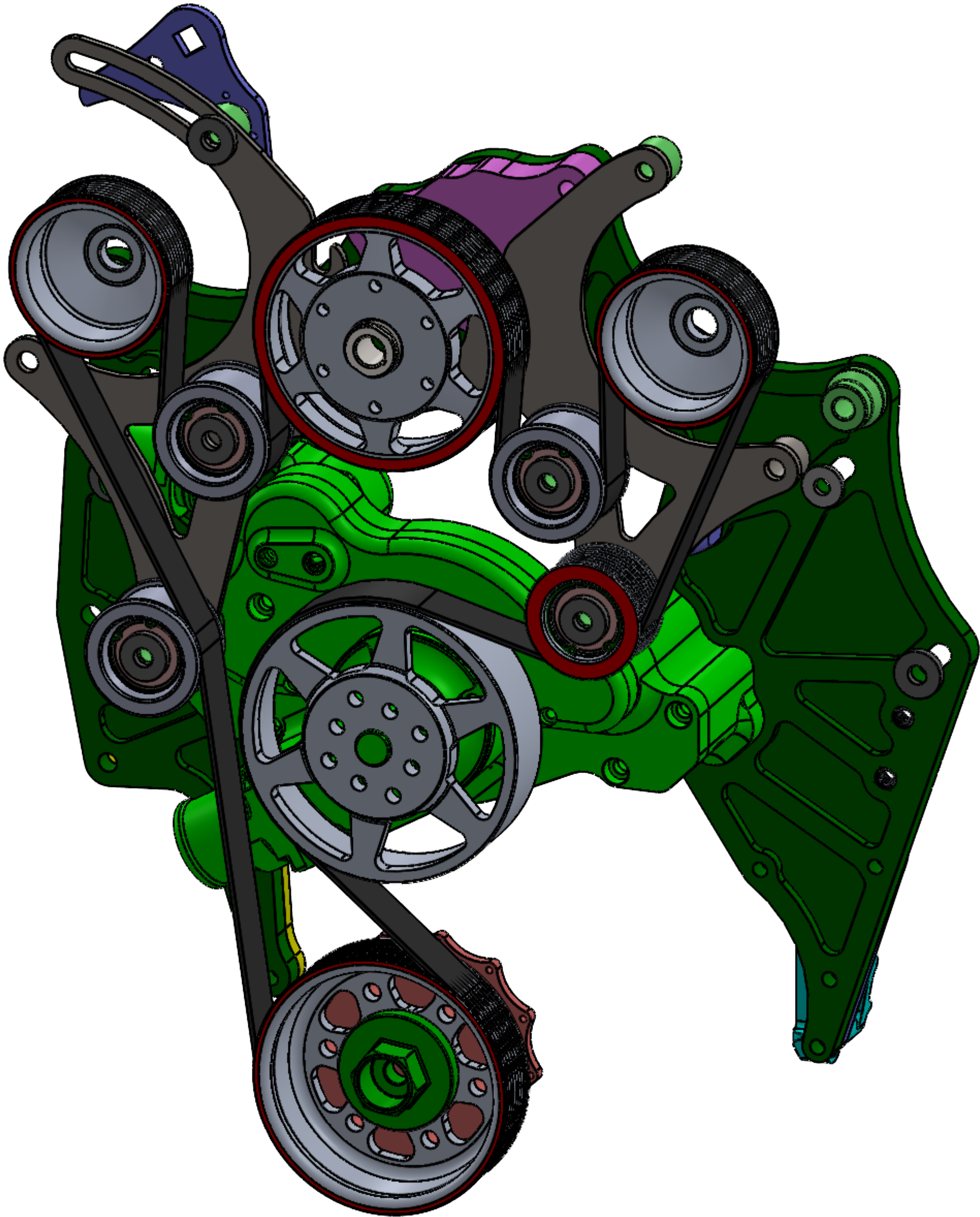
PROPRIETARY AND CONFIDENTIAL
THE INFORMATION CONTAINED IN THIS
DRAWING IS THE SOLE PROPERTY OF
ID DESIGNS. ANY REPRODUCTION IN
PART OR AS A WHOLE WITHOUT THE
WRITTEN PERMISSION OF ID DESIGNS
IS PROHIBITED.

ID DESIGNS2485 CORAL ST. UNIT A
VISTA, CA 92081PH.760.727.9900
E MAIL INFO@IDDESIGNS.NET

TITLE:

| | | |
|---------------------|---------------------|-----|
| SIZE | PART NO. | REV |
| C | IDD 11-1900-02 REV1 | |
| SCALE: 1:10 WEIGHT: | SHEET 3 OF 5 | |

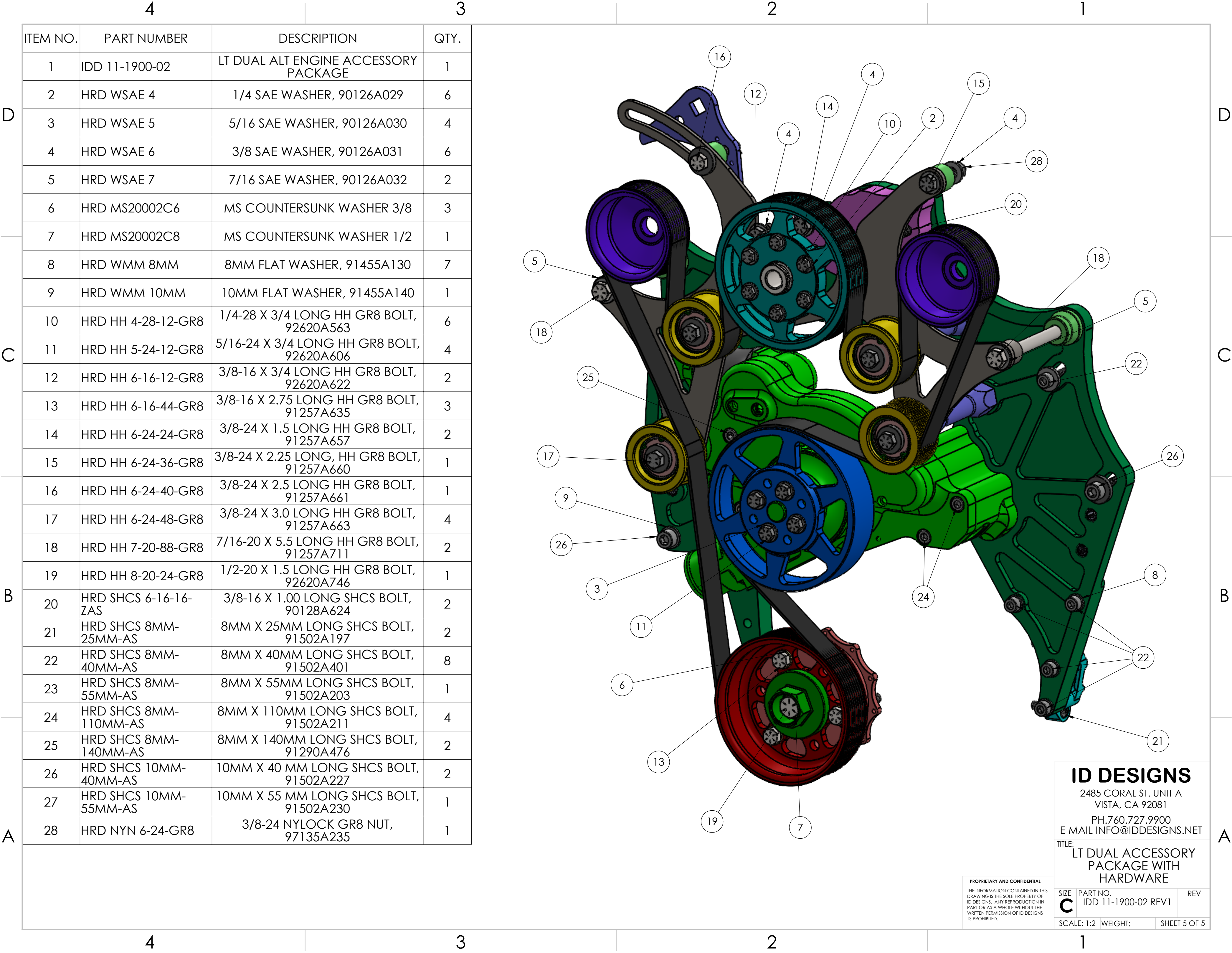
PULLEYS WITH RED HIGHLIGHTED FACES SHOULD BE COPLANAR
THE USE OF SHIMS MAY BE NECESSARY FOR THE PS PULLEY



ID DESIGNS
2485 CORAL ST. UNIT A
VISTA, CA 92081
PH.760.727.9900
E MAIL INFO@IDDESIGNS.NET
TITLE:
LT DUAL ALT ENGINE
ACCESSORY PACKAGE

PROPRIETARY AND CONFIDENTIAL
THE INFORMATION CONTAINED IN THIS
DRAWING IS THE SOLE PROPERTY OF
ID DESIGNS. ANY REPRODUCTION IN
PART OR AS A WHOLE WITHOUT THE
WRITTEN PERMISSION OF ID DESIGNS
IS PROHIBITED.

| | | |
|------------|---------------------|--------------|
| SIZE | PART NO. | REV |
| C | IDD 11-1900-02 REV1 | |
| SCALE: 1:5 | WEIGHT: | SHEET 4 OF 5 |



| ITEM NO. | PART NUMBER | DESCRIPTION | QTY. |
|----------|-----------------------|--|------|
| 1 | IDD 11-1900-02 | LT DUAL ALT ENGINE ACCESSORY PACKAGE | 1 |
| 2 | HRD WSAE 4 | 1/4 SAE WASHER, 90126A029 | 6 |
| 3 | HRD WSAE 5 | 5/16 SAE WASHER, 90126A030 | 4 |
| 4 | HRD WSAE 6 | 3/8 SAE WASHER, 90126A031 | 6 |
| 5 | HRD WSAE 7 | 7/16 SAE WASHER, 90126A032 | 2 |
| 6 | HRD MS20002C6 | MS COUNTERSUNK WASHER 3/8 | 3 |
| 7 | HRD MS20002C8 | MS COUNTERSUNK WASHER 1/2 | 1 |
| 8 | HRD WMM 8MM | 8MM FLAT WASHER, 91455A130 | 7 |
| 9 | HRD WMM 10MM | 10MM FLAT WASHER, 91455A140 | 1 |
| 10 | HRD HH 4-28-12-GR8 | 1/4-28 X 3/4 LONG HH GR8 BOLT, 92620A563 | 6 |
| 11 | HRD HH 5-24-12-GR8 | 5/16-24 X 3/4 LONG HH GR8 BOLT, 92620A606 | 4 |
| 12 | HRD HH 6-16-12-GR8 | 3/8-16 X 3/4 LONG HH GR8 BOLT, 92620A622 | 2 |
| 13 | HRD HH 6-16-44-GR8 | 3/8-16 X 2.75 LONG HH GR8 BOLT, 91257A635 | 3 |
| 14 | HRD HH 6-24-24-GR8 | 3/8-24 X 1.5 LONG HH GR8 BOLT, 91257A657 | 2 |
| 15 | HRD HH 6-24-36-GR8 | 3/8-24 X 2.25 LONG, HH GR8 BOLT, 91257A660 | 1 |
| 16 | HRD HH 6-24-40-GR8 | 3/8-24 X 2.5 LONG HH GR8 BOLT, 91257A661 | 1 |
| 17 | HRD HH 6-24-48-GR8 | 3/8-24 X 3.0 LONG HH GR8 BOLT, 91257A663 | 4 |
| 18 | HRD HH 7-20-88-GR8 | 7/16-20 X 5.5 LONG HH GR8 BOLT, 91257A711 | 2 |
| 19 | HRD HH 8-20-24-GR8 | 1/2-20 X 1.5 LONG HH GR8 BOLT, 92620A746 | 1 |
| 20 | HRD SHCS 6-16-16-ZAS | 3/8-16 X 1.00 LONG SHCS BOLT, 90128A624 | 2 |
| 21 | HRD SHCS 8MM-25MM-AS | 8MM X 25MM LONG SHCS BOLT, 91502A197 | 2 |
| 22 | HRD SHCS 8MM-40MM-AS | 8MM X 40MM LONG SHCS BOLT, 91502A401 | 8 |
| 23 | HRD SHCS 8MM-55MM-AS | 8MM X 55MM LONG SHCS BOLT, 91502A203 | 1 |
| 24 | HRD SHCS 8MM-110MM-AS | 8MM X 110MM LONG SHCS BOLT, 91502A211 | 4 |
| 25 | HRD SHCS 8MM-140MM-AS | 8MM X 140MM LONG SHCS BOLT, 91290A476 | 2 |
| 26 | HRD SHCS 10MM-40MM-AS | 10MM X 40 MM LONG SHCS BOLT, 91502A227 | 2 |
| 27 | HRD SHCS 10MM-55MM-AS | 10MM X 55 MM LONG SHCS BOLT, 91502A230 | 1 |
| 28 | HRD NYN 6-24-GR8 | 3/8-24 NYLOCK GR8 NUT, 97135A235 | 1 |

ID DESIGNS
2485 CORAL ST. UNIT A
VISTA, CA 92081
PH.760.727.9900
E MAIL INFO@IDDESIGNS.NET
TITLE:
LT DUAL ACCESSORY
PACKAGE WITH
HARDWARE

PROPRIETARY AND CONFIDENTIAL
THE INFORMATION CONTAINED IN THIS
DRAWING IS THE SOLE PROPERTY OF
ID DESIGNS. ANY REPRODUCTION IN
PART OR AS A WHOLE WITHOUT THE
WRITTEN PERMISSION OF ID DESIGNS
IS PROHIBITED.

| | | |
|------------|---------------------|--------------|
| SIZE | PART NO. | REV |
| C | IDD 11-1900-02 REV1 | |
| SCALE: 1:2 | WEIGHT: | SHEET 5 OF 5 |